



杭州海煜机械有限公司
HANGZHOU HAIYU MACHINERY CO., LTD

— 专业制造 —

MACHINE
HAIYU

杭州海煜机械有限公司
HANGZHOU HAIYU MACHINERY CO., LTD

地址：中国浙江杭州市萧山区临浦镇
Add: Linpu Xiaoshan Hangzhou Zhejiang China
电话：+86-571-82462740 Tel: +86-571-82462740
传真：+86-571-82421008 Fax: +86-571-82421008
手机：13506715592 Mobile: 13506715592
邮编：311251 P.C: 311251
网址：Http://www.haiyujx.cn
Http://www.hzhxslphy.1688.com
E-mail: haiyu338@126.com



COMPANY

>> INTRODUCTION

公司简介



公司成立于1988年，经过不断的技术整合，在2003年，正式更名为杭州海煜机械有限公司。通过近30年的研究试用，公司拥有丰富的生产经验，精湛的技术工艺，各系列产品深受广大中外客户的好评。现公司拥有自营进出口权，产品远销东南亚、中东等国家。

公司主要生产NS、SU系列自吸泵，高压喷灌泵，滴灌泵、减速机系列等，以及铝铸车间和铁铸车间对外加工配套。公司生产的产品，以完美的造型，高标准的质量，一流的服务，深受国内外用户的一致好评。

公司为树立全新的形象，争创一流的产品质量和竞争优势，以更好的满足用户需求。在2005年底，公司的铸造车间投入了新的生产线，采用脱箱震压造型机造型和覆膜砂铸造工艺，这不但节省了工装，使水泵产量大大增加，而且提高了铸件的质量和外观光洁度，使铸件厚度均衡。在2013年底，公司扩大生产规模，收购了杭州华利铸造有限公司，建立了专业的铸造生产基地。

现公司全体员工人数达到180余人，各类专业技术人才60余人，有总面积3万余平方米的厂区，支持多项产业链共同生产，提供从铸造，精加工，装配到整机出厂的一条龙生产服务。

公司以“诚信为本，质量第一；不断创新，追求卓越”为宗旨，真诚地期待与新老客户建立长期友好合作关系。

热忱欢迎新老客户光临！

HaiYu company was founded in 1988, through continuous technology integration, in 2003, it officially changed its name to Hangzhou Haiyu Machinery Co. Through nearly 30 years of research and trials, our company has extensive production experience, superb technique, the series of products are popular among the majority of Chinese and foreign customers. Now HaiYu has had import and export right in 2008, the products are exported to Southeast Asia, the Middle East and other countries.

The company mainly produces NS, SU series of self-priming pumps, high-pressure sprinkler pumps, drip irrigation pumps, reducer series, as well as aluminum casting workshop and iron casting workshop external processing supporting. The company's products, with perfect shape, high standard quality and first-class service, are well received by domestic and foreign users.

The company in order to establish a new image, top-notch product quality and competitive advantage, so that to better meet customer needs. In 2005, the company's casting workshop into a new production line, using shock compression molding machine off box shape and coated sand molding process, which not only saves tooling, greatly increased the pump output, but also improves castings' the quality and appearance of the finish, and making the casting's weights are consistent. In 2013, our company to expand production scale, the acquisition of Hangzhou Houlihua Lokey Casting Co., Ltd, establishing a professional casting production base.

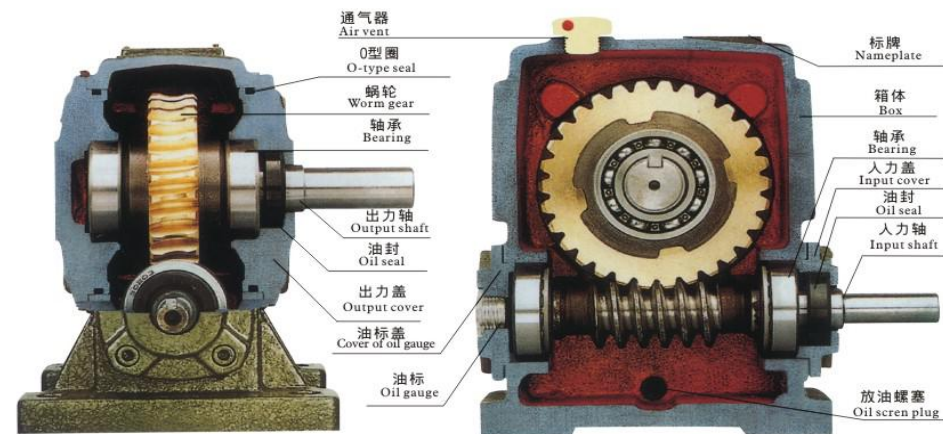
At present, the company has all employees more than 180 people, and all kinds of professionals more than 60 people, has a total area of about 30,000 square meters of factory, supporting a number of producing line jointly-production, and providing the whole set of production services from casting, finishing, assembling, and to whole machine out factory.

Our company to "honesty, quality first; constant innovation, the pursuit of excellence" for the purpose, sincerely look forward to establish long-term friendly and cooperative relationships with new and old customers.

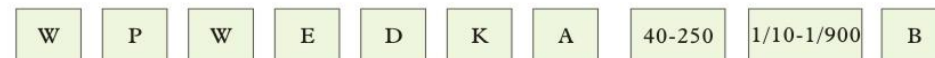
We warmly welcome new and old customers!



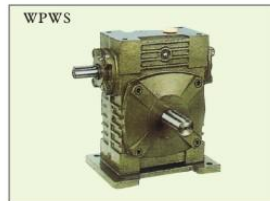
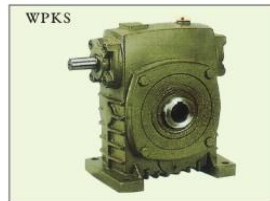
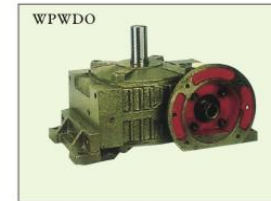
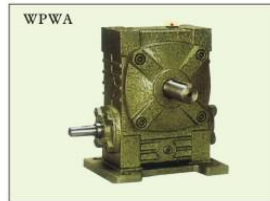
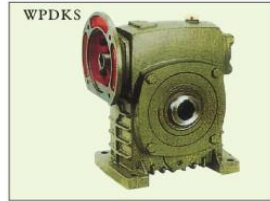
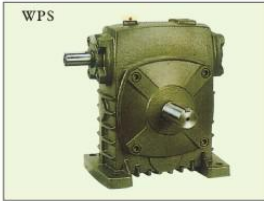
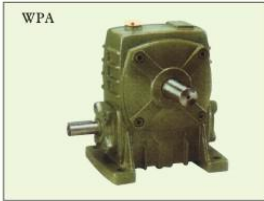
蜗轮减速机产品结构图
Product structural drawing of Worm gear speed reducer



通惠减速机型号及表示法
Type & Expressions of Tonghui Speed Reducer

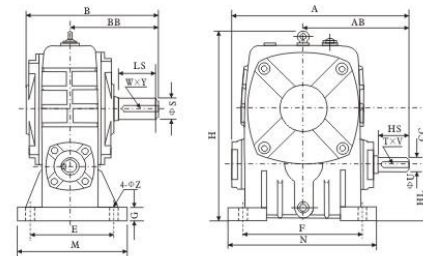


- 产品代码**
W--蜗轮减速机
product code
W-Worm gear Speed reducer
- 整体结构**
P--整体
Box Structure
P-Whole
- 箱体形式**
W--万能型
无代码--基本型
Box model
W-Universal
Non-code-basic
- 整机结构**
E--双级
EE--多级
无代码--基本型
Unit structure
E-Double
EE-Multistage
Non-code-basic
- 连接方式**
D--入轴带电机法兰
无代码--基本型
Connector of input shaft
D-Input shaft with motor frange
Non-code-basic
- 出轴结构**
K--中孔出轴
无代码--基本型
Structure of input shaft
K-Hollow Structure
Non-code-basic
- 整体结构形式**
A--入轴在下 S--入轴在上
Q--出轴向上 X--出轴向下
T--入轴向上 V--入轴向下
无代码--基本型
Box structure
Structure of input shaft
A-Input shaft is below
S-Input shaft is above
O-Output shaft is upward
X-Output shaft is downward
T-Input shaft is upward
V-Input shaft is downward
Non-code-basic
- 中心距**
40-250
Center distance
40-250
- 减速比**
1/10-1/900
Ratio
1/10-1/900
- 轴指向**
B
Output shaft direction
B

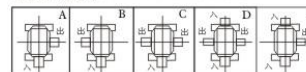




WPA型

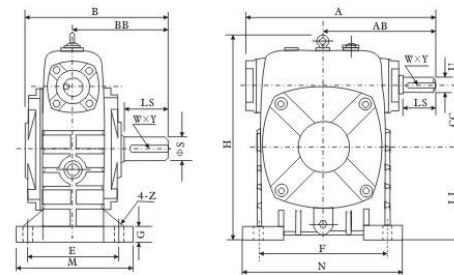


轴指向表示 SHAFT DIRECTION

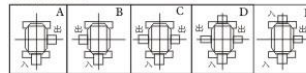


型号 size	减速比 ratio	A	AB	B	BB	CC	H	HL	M	N	E	F	G	Z	人力轴 HS	input shaft U	出力轴 T×V	output shaft LS S W×Y	重量 weight (kg)
		40	143	87	114	74	40	138	40	90	100	70	80	13	10	25	12	4×2.5	28 14 5×3
50	175	107	150	97	50	176	50	120	140	95	110	15	12	30	12	4×2.5	40 17 5×3	7	
60	198	122	168	112	60	204	60	130	150	105	120	20	12	40	15	5×3	50 22 6×3.5	10	
70	1/10	231	140	194	131	70	236	70	150	190	115	150	20	15	40	18	6×3.5	60 28 8×4	15
80	1/20	261	160	214	142	80	268	80	170	220	135	180	20	15	50	22	6×3.5	65 32 10×5	20
100	1/25	322	190	254	169	100	336	100	190	270	155	220	25	15	50	25	8×4	75 38 10×5	35
120	1/30	381	229	282	190	120	430	120	230	320	180	260	30	18	65	30	8×4	85 45 14×5.5	60
135	1/40	433	260	317	210	135	480	135	250	350	200	290	30	18	75	35	10×5	95 55 16×6	80
155	1/50	504	302	382	252	155	531	155	275	390	220	320	35	21	85	40	12×5	110 60 18×7	110
175	1/60	545	325	402	262	175	600	160	310	430	250	350	40	21	85	45	14×5.5	110 65 18×7	150
200		587	350	467	305	200	666	175	360	480	290	390	40	24	95	50	14×5.5	125 70 20×7.5	215
250		705	420	552	360	250	800	200	460	560	380	480	45	28	110	60	18×7	155 90 25×9	360

WPS型



轴指向表示 SHAFT DIRECTION

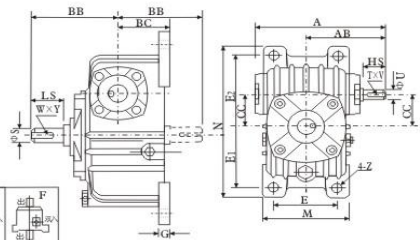


型号 size	减速比 ratio	A	AB	B	BB	CC	H	LL	M	N	E	F	G	Z	人力轴 HS	input shaft U	出力轴 T×V	output shaft LS S W×Y	重量 weight (kg)
		40	143	87	114	74	40	141	60	90	100	70	80	13	10	25	12	4×2.5	28 14 5×3
50	175	107	150	97	50	180	80	120	140	95	110	15	12	30	12	4×2.5	40 17 5×3	7	
60	1/10	198	122	168	112	60	207	90	130	150	105	120	20	12	40	15	5×3	50 22 6×3.5	10
70	1/15	231	140	194	131	70	238	105	150	190	115	150	20	15	40	18	6×3.5	60 28 8×4	15
80	1/20	261	160	214	142	80	273	120	170	220	135	180	20	15	50	22	6×3.5	65 32 10×5	20
100	1/25	322	190	254	169	100	334	150	190	270	155	220	25	15	50	25	8×4	75 38 10×5	35
120	1/30	381	229	282	190	120	423	180	230	320	180	260	30	18	65	30	8×4	85 45 14×5.5	60
135	1/40	433	260	317	210	135	482	215	250	350	200	290	30	18	75	35	10×5	95 55 16×6	80
155	1/50	504	302	382	252	155	541	235	275	390	220	320	35	21	85	40	12×5	110 60 18×7	110
175	1/60	545	325	402	262	175	600	260	310	430	250	350	40	21	85	45	14×5.5	110 65 18×7	150
200		587	350	467	305	200	677	290	360	480	290	390	40	24	95	50	14×5.5	125 70 20×7.5	215
250		705	420	552	360	250	824	350	460	560	380	480	45	28	110	60	18×7	155 90 25×9	360

WPX型



WPO型



轴指向表示 SHAFT DIRECTION

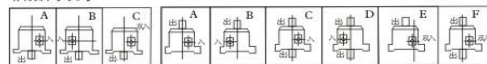
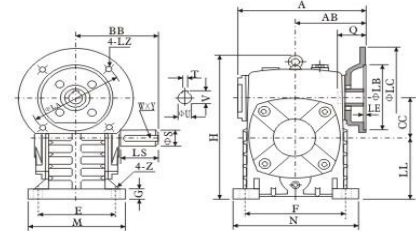


Table with 24 columns: 型号 size, 减速比 ratio, A, AB, BB, BC, CC, M, N, E, E1, E2, G, Z, 入力轴 input shaft, 出力轴 output shaft, 重量 weight.

WPDS型



轴指向表示 SHAFT DIRECTION

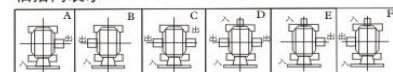
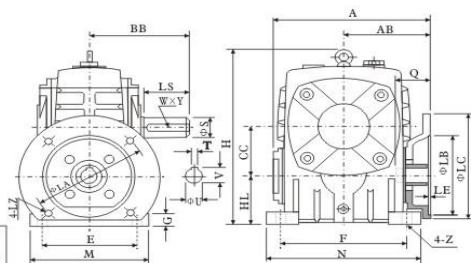


Table with 24 columns: 型号 size, 减速比 ratio, A, AB, BB, CC, H, LL, M, N, E, F, G, Z, 电机法兰 flange, 入力孔 input hole, 出力轴 output shaft, 重量 weight.

6 海煜机械

WPDA型



轴指向表示 SHAFT DIRECTION

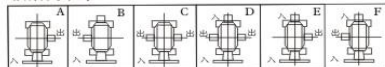


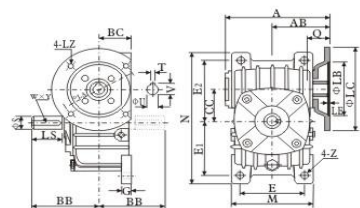
Table with 24 columns: 型号 size, 减速比 ratio, A, AB, BB, CC, H, HL, M, N, E, F, G, Z, 电机法兰 flange, 入力孔 input hole, 出力轴 output shaft, 重量 weight.

7 海煜机械

WPDX型



WPDO型



WPDX轴指向表示 SHAFT DIRECTION

WPDO轴指向表示 SHAFT DIRECTION

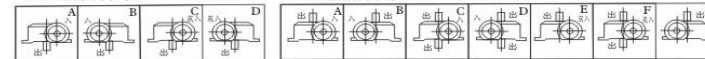
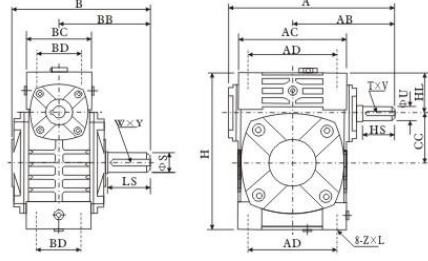
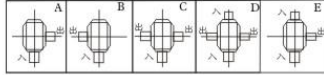


Table with 24 columns: 型号 size, 减速比 ratio, A, AB, BB, BC, CC, M, N, E, E1, E2, G, Z, 电机法兰 flange, 入力孔 input hole, 出力轴 output shaft, 重量 weight.

WPW型



轴指向表示 SHAFT DIRECTION

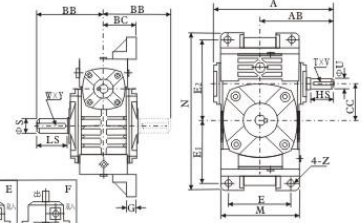


型号 size	减速比 ratio	A	AB	B	BB	AC	BC	AD	BD	CC	HL	H	Z×L	人力轴 HS	input shaft U	出力轴 T×V	output shaft LS	S	W×Y	重量 (kg)
40		149	89	124	79	95	61	78	42	40	35	125	M6×12	25	12	4×2.5	28	14	5×3	4
50		175	107	150	97	111	68	85	50	50	35	150	M6×18	30	12	4×2.5	40	17	5×3	6.5
60	1/10	198	122	168	112	127	76	105	55	60	42	177	M8×20	40	15	5×3	50	22	6×3.5	9
70	1/15	231	140	194	131	152	86	125	65	70	55	215	M10×25	40	18	6×3.5	60	28	8×4	13
80	1/20	261	160	214	142	169	102	140	70	80	65	250	M12×28	50	22	6×3.5	65	32	10×5	21
100	1/25	322	190	254	169	216	117	180	90	100	80	310	M12×30	50	25	8×4	75	38	10×5	34
120	1/30	381	229	282	190	256	124	220	100	120	95	370	M14×32	65	30	8×4	85	45	14×5.5	51
135	1/40	433	260	317	210	296	147	260	110	135	105	425	M16×35	75	35	10×5	95	55	16×6	78
155	1/50	504	302	382	252	345	185	280	120	155	113	461	M16×35	85	40	12×5	110	60	18×7	102
175	1/60	545	325	402	262	374	192	320	140	175	123	521	M16×35	85	45	14×5.5	110	65	18×7	142
200		587	350	467	305	412	230	360	150	200	130	575	M20×36	95	50	14×5.5	125	70	20×7.5	202
250		705	420	552	360	500	285	420	190	250	150	700	M34×42	110	60	18×7	155	90	25×9	340

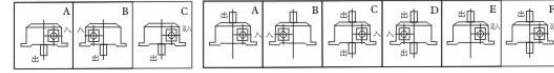
WPWX型



WPWO型



轴指向表示 SHAFT DIRECTION

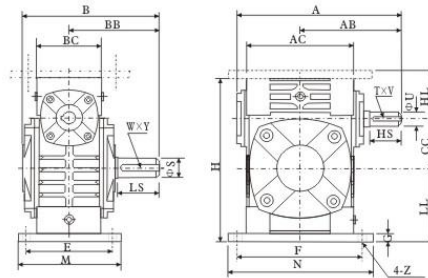


型号 size	减速比 ratio	A	AB	BB	BC	CC	M	N	E	E1	E2	G	Z	人力轴 HS	input shaft U	出力轴 T×V	output shaft LS	S	W×Y	重量 (kg)
40		149	89	79	45	40	95	187	70	72	97	12	10	25	12	4×2.5	28	14	5×3	5
50		175	107	97	50	50	111	226	90	90	110	14	12	30	12	4×2.5	40	17	5×3	8
60	1/10	198	122	112	55	60	127	257	100	102	129	15	12	40	15	5×3	50	22	6×3.5	11
70	1/15	231	140	131	65	70	152	305	120	120	155	20	15	40	18	6×3.5	60	28	8×4	15.5
80	1/20	261	160	142	70	80	174	350	140	140	180	20	15	50	22	6×3.5	65	32	10×5	24
100	1/25	322	190	169	90	100	224	410	190	165	215	22	15	50	25	8×4	75	38	10×5	38
120	1/30	381	229	190	100	120	264	494	220	195	255	25	18	65	30	8×4	85	45	14×5.5	56
135	1/40	433	260	210	110	135	304	559	260	230	285	30	18	75	35	10×5	95	55	16×6	84
155	1/50	504	302	252	140	155	345	605	290	250	305	35	21	85	40	12×5	110	60	18×7	129
175	1/60	545	325	262	150	175	374	675	320	273	348	40	21	85	45	14×5.5	110	65	18×7	157
200		587	350	305	175	200	424	749	370	305	390	40	24	95	50	14×5.5	125	70	20×7.5	224
250		705	420	552	200	250	510	920	440	375	475	45	28	110	60	18×7	155	90	25×9	374

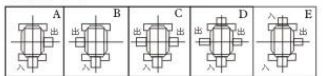
WPWA型



WPWS型



轴指向表示 SHAFT DIRECTION

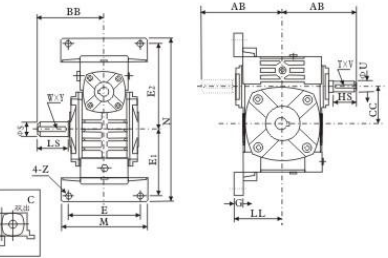


型号 size	减速比 ratio	A	AB	B	BB	AC	BC	CC	HL	LL	H	M	N	E	F	G	Z	人力轴 HS	input shaft U	出力轴 T×V	output shaft LS	S	W×Y	重量 (kg)
40		149	89	124	79	95	61	40	45	60	135	100	130	80	110	10	10	25	12	4×2.5	28	14	5×3	4.5
50		175	107	150	97	111	68	50	50	80	165	120	140	95	110	15	12	30	12	4×2.5	40	17	5×3	7.5
60	1/10	198	122	168	112	127	76	60	60	93	195	130	150	105	120	18	12	40	15	5×3	50	22	6×3.5	11.5
70	1/15	231	140	194	131	152	86	70	73	108	233	150	190	115	150	18	15	40	18	6×3.5	60	28	8×4	15.5
80	1/20	261	160	214	142	169	102	80	83	123	268	170	220	135	180	18	15	50	22	6×3.5	65	32	10×5	24
100	1/25	322	190	254	169	216	117	100	100	150	330	190	270	155	220	20	15	50	25	8×4	75	38	10×5	39
120	1/30	381	229	282	190	256	124	120	120	180	395	230	320	180	260	25	18	65	30	8×4	85	45	14×5.5	57
135	1/40	433	260	317	210	296	147	135	135	215	455	250	350	200	290	30	18	75	35	10×5	95	55	16×6	85
155	1/50	504	302	382	252	345	185	155	135	235	493	280	380	220	320	32	21	85	40	12×5	110	60	18×7	110
175	1/60	545	325	402	262	374	192	175	160	260	558	310	410	250	350	37	21	85	45	14×5.5	110	65	18×7	152
200		587	350	467	305	412	230	200	175	290	620	355	445	290	390	45	24	95	50	14×5.5	125	70	20×7.5	216
250		705	420	552	360	500	285	250	200	350	750	460	560	380	480	50	28	110	60	18×7	155	90	25×9	350

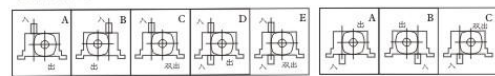
WPWT型



WPVW型



轴指向表示 SHAFT DIRECTION



型号 size	减速比 ratio	AB	BB	CC	LL	M	N	E	E1	E2	G	Z	人力轴 HS	input shaft U	出力轴 T×V	output shaft LS	S	W×Y	重量 (kg)
40		87	79	40	63	90	187	70	72	97	12	10	25	12	4×2.5	28	14	5×3	5
50		107	97	50	70	120	226	95	90	110	14	12	30	12	4×2.5	40	17	5×3	8
60	1/10	122	112	60	80	130	257	105	102	129	15	12	40	15	5×3	50	22	6×3.5	11
70	1/15	140	131	70	95	150	305	115	120	155	20	15	40	18	6×3.5	60	28	8×4	15.5
80	1/20	160	142	80	105	170	350	135	140	180	20	15	50	22	6×3.5	65	32	10×5	24
100	1/25	190	169	100	135	190	410	155	165	215	22	15	50	25	8×4	75	38	10×5	38
120	1/30	229	190	120	160	230	494	180	195	255	25	18	65	30	8×4	85	45	14×5.5	56
135	1/40	260	210	135	185	250	559	200	230	285	30	18	75	35	10×5	95	55	16×6	84
155	1/50	302	252	155	220	275	605	220	250	305	35	21	85	40	12×5	110	60	18×7	129
175	1/60	325	262	175	240	310	675	250	273	348	40	21	85	45	14×5.5	110	65	18×7	157
200		350	305	200	280	360	749	290	305	390	40	24	95	50	14×5.5	125	70	20×7.5	224
250		420	552	250	315	460	920	380	375	475	45	28	110	60	18×7	155	90	25×9	374

WP (A. S. O. X) 型输入轴功率及出力轴力矩表

输入轴转速 Speed of input shaft: 1500r/min

功率及力矩 Power and moment 减速比 ratio 型号 size	输入轴功率 Input (kw)								出力轴力矩 output (N.m)							
	1/10	1/15	1/20	1/25	1/30	1/40	1/50	1/60	1/10	1/15	1/20	1/25	1/30	1/40	1/50	1/60
40	0.40	0.33	0.26	0.24	0.22	0.16	0.14	0.12	19	23	20	25	25	20	22	20
50	0.65	0.52	0.40	0.37	0.34	0.27	0.24	0.20	31	36	32	38	37	36	37	35
60	1.00	0.82	0.65	0.59	0.54	0.45	0.40	0.32	50	58	56	68	62	71	73	59
70	1.60	1.35	1.10	0.96	0.82	0.67	0.61	0.52	83	98	101	112	99	104	113	97
80	2.20	1.78	1.36	1.28	1.20	0.90	0.80	0.75	113	133	120	149	151	140	145	146
100	3.60	3.10	2.60	2.35	2.10	1.68	1.30	1.00	193	237	258	284	277	291	257	229
120	5.20	4.35	3.50	3.25	3.00	2.20	1.90	1.50	262	336	361	404	413	392	399	355
135	9.75	7.85	6.00	5.5	5.00	3.69	2.89	2.30	540	622	619	696	707	607	626	562
155	12.80	9.90	7.00	6.53	6.00	4.40	3.61	3.00	709	785	722	842	848	784	770	791
175	17.30	13.60	10.00	9.13	8.30	6.18	4.85	4.07	958	1091	1044	1221	1189	1133	1127	1078
200	17.95	14.93	11.90	10.90	9.88	7.75	6.06	4.93	994	1198	1258	1405	1415	1441	1370	1281
250	33.20	27.40	21.60	20.00	18.43	14.00	10.43	8.62	1881	2266	2310	2579	2745	2674	2357	2371

WPD (A. S. O. X) 型输入轴功率及出力轴力矩表

输入轴转速 Speed of input shaft: 1500r/min

功率及力矩 Power and moment 减速比 ratio 型号 size	输入轴功率 Input (kw)								出力轴力矩 output (N.m)							
	1/10	1/15	1/20	1/25	1/30	1/40	1/50	1/60	1/10	1/15	1/20	1/25	1/30	1/40	1/50	1/60
50	0.18								8	12	16	19	20	24	31	35
60	0.37								18	26	34	40	42	50	61	73
70	0.75				0.37				38	54	70	87	95	57	59	70
80	1.5				0.75				76	112	142	174	188	137	150	154
100	1.5								75	115	140	181	198	256	307	320
120	3				2.2				149	232	278	372	403	376	480	509
135	4				3				195	317	375	506	529	510	625	650
155	5.5								240	436	480	709	720	824	1029	1098

故障原因及解决办法

故障情况	产生原因	排除方法
发热	原动机、减速机工作连接不同心 润滑油过多或过少 润滑油牌号不符 油封过度磨擦 超负荷运转	调整至合适位置,保持三者连接同心 按油标指示点调整油量 更换合适新油 在油封口清润滑油 按实际扭矩配置减速机
漏油	油量过多 油标破损 油封唇口磨损 油封轴轴外圆磨损 放油螺塞未旋紧	加油至油标指示点上 更换油标 更换油封 更换新轴 旋紧螺塞
噪音大	蜗轮副啮合不良 轴承磨损 润滑油不足 安装连接不当,或松动	更换蜗轮蜗标。(与本公司联系) 更换轴承 加油至油标指示点上 调整、紧固
震动	原动机、减速机、工作机固定不良 轴承磨损 蜗轮副磨损	检查松动部位,并正确紧固 更换轴承 更换蜗轮轴
蜗轮副齿面 磨损过快	润滑油不符合要求 润滑油不足 超负荷运转 未按规定适时换油	更换合适润滑油 经常检查,并加足润滑油 调整在允许负荷以内 按规定适时换油

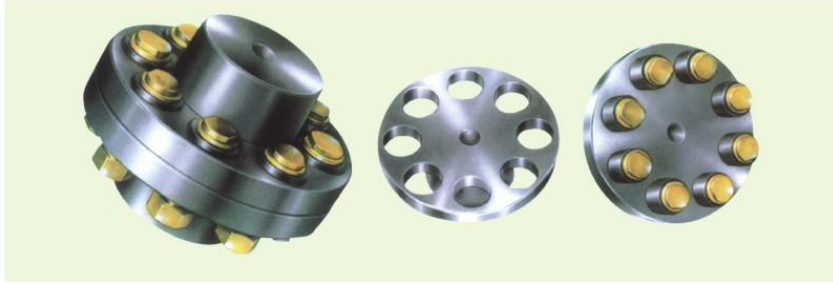
安装与使用
一、安装注意事项:

- 1、本机安装前,应检查它的速比、机型结构、装配形式、中心距规格、输入功率,及回转方向是否符合使用要求。
- 2、减速机应安装在坚固的底座平面上,螺栓必须紧固、防震、四周应通风,以使工作时能散发热量。本机与原动机、本机与工作机若用联轴器之类连接时,同心度应在0.02mm以内。本机输入及输出轴外圆公差按h6制作。与之配装的外接件内孔须按合适的公差配合,过紧和过松都会影响本机的正常使用。
- 3、齿轮、链轮等在轴伸上做连接传动时,应尽量靠近轴承处,减少轴伸弯曲。
- 4、WPD型减速机在配装电机时,先在输入轴内孔涂上黄油,然后安装。若电机偏重,则应设置支撑装置。

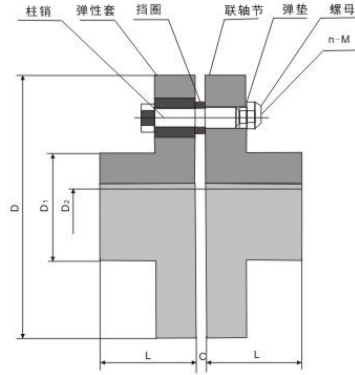
二、使用注意事项:

- 1、使用前应先检查本机的安装是否符合要求,然后按照“润滑油的选择方法”加入合适牌号润滑油,绝对不能用不符合要求的润滑油代替。加油至油标中心点之间,不能加得太满,并取掉通气盖的小螺钉,保持空气畅通。
- 2、首次使用80小时后换油、洗净内部,上新油,以后每工作2000小时换油一次。
- 3、在使用中若产生不正常情况时应及时停机检查,并按“故障原因及解决办法”来处理。本机最高油温为80℃。

■ YXL型弹性套柱销联轴器的型号和参数油的选择使用
YXL type model and size of flexible coupling



YXL型弹性套柱销联轴器的特点是结构简单，安装方便，更换容易，尺寸小，重量轻，因而得到广泛使用。弹性套柱销联轴器的许用两轴相对位移：
径向位移：0.2-0.6MM
角位移： $0^{\circ} 30' \sim 1^{\circ} 30'$



型号 size	许用转矩 N.m	许用转速 r/min	D	D ₁	D ₂	L	C	n-M□	重量 KG
YXL90	4	4000	90	36	11	28	3	4-M8×50	1.8
YXL100	10	4000	100	40	11	35.5	3	4-M10×56	2.3
YXL112	16	4000	112	46	13	40	3	4-M10×56	3.0
YXL125	25	4000	125	50	13	45	3	4-M12×64	4.0
YXL140	50	4000	140	65	13	50	3	6-M12×64	5.5
YXL160	110	4000	160	80	15	56	3	8-M12×64	8.0
YXL180	157	3500	180	90	15	63	3	8-M12×64	10.5
YXL200	245	3200	200	100	21	71	4	8-M20×85	16.2
YXL224	392	2850	224	115	21	80	4	8-M20×85	22
YXL250	618	2550	250	135	25	90	4	8-M24×100	32
YXL280	980	2300	280	140	34	100	4	8-M24×116	44.0
YXL315	1568	2050	315	160	41	112	4	10-M24×116	58
YXL355	2450	1800	355	180	60	125	5	8-M30×150	90
YXL400	3920	1600	400	200	60	125	5	10-M30×150	113
YXL450	6174	1400	450	224	65	140	5	12-M30×150	145
YXL560	9800	1150	560	250	85	160	5	14-M30×150	229
YXL630	15680	1000	630	280	95	180	5	18-M30×150	296

■ 各种齿轮、轴



■ 定制减速机





杭州海煜机械有限公司 HANGZHOU HAIYU MACHINERY CO., LTD

—— 水泵专业制造 ——



杭州海煜机械有限公司 HANGZHOU HAIYU MACHINERY CO., LTD

地址：中国浙江杭州亦萧山区临浦镇
Add: Linpu Xiaoshan Hangzhou Zhejiang China
电话：+86-571-82462740 Tel: +86-571-82462740
传真：+86-571-82421008 Fax: +86-571-82421008
手机：13506715592 Mobile: 13506715592
邮编：311251 P.O: 311251
公司主页：<http://www.hz-haiyu.cn>
[Http://www.hzhaiyu.com](http://www.hzhaiyu.com)
[Http://www.hzhaiyu.en.alibaba.com](http://www.hzhaiyu.en.alibaba.com)



COMPANY

INTRODUCTION

企业简介

我公司成立于1988年，经过不断的技术整合，在2003年，正式更名为杭州海煜机械有限公司。通过近30年的研究试用，我公司拥有丰富的生产经验，精湛的技术工艺，各系列产品深受广大中外客户的好评。现公司拥有自营进出口权，产品远销东南亚、中东等国家。

公司主要生产NS、SU系列自吸泵，高压喷灌泵，滴灌泵等，以及铝铸车间和铁铸车间对外加工配套。我公司生产的产品，以完美的造型，高标准的质量，一流的服务，深受国内外用户的一致好评。

公司为树立全新的形象，争创一流的产品质量和竞争优势，以更好的满足用户需求。在2005年底，公司的铸造车间投入了新的生产线，采用脱箱震压造型机造型和覆膜砂制造工艺，这不但节省了工装，使水泵产量大大增加，而且提高了铸件的质量和外观光洁度，使铸件厚度均衡。在2013年底，我公司扩大生产规模，收购了杭州华利铸造有限公司，建立了专业的铸造生产基地。

现公司全体员工人数达到180余人，各类专业技术人才60余人，有总面积3万余平方米的厂区，支持多项产业链共同生产，提供从铸造，精加工，装配到整机出厂的一条龙生产服务。

我公司以“诚信为本，质量第一；不断创新，追求卓越”为宗旨，真诚地期待与新老客户建立长期友好合作关系。

热忱欢迎新老客户光临！

HaiYu company was founded in 1988, through continuous technology integration, in 2003, it officially changed its name to Hangzhou Haiyu Machinery Co. Through nearly 30 years of research and trials, our company has extensive production experience, superb technique, the series of products are popular among the majority of Chinese and foreign customers. Now HaiYu has had import and export right in 2008, the products are exported to Southeast Asia, the Middle East and other countries.

The company mainly produces NS and SU series pumps, high-pressure irrigation pump, drip irrigation pumps, etc., as well as aluminum casting workshop and iron casting workshop to external processing facilities. Our company's products, through perfect shape, high standards of quality, first-class service, domestic and international users by the praise.

The company in order to establish a new image, top-notch product quality and competitive advantage, so that to better meet customer needs. In 2005, the company's casting workshop into a new production line, using shock compression molding machine off box shape and coated sand molding process, which not only saves tooling, greatly increased the pump output, but also improves castings' the quality and appearance of the finish, and making the casting's weights are consistent. In 2013, our company to expand production scale, the acquisition of Hangzhou Houlihua Lokey Casting Co., Ltd, establishing a professional casting production base.

At present, the company has all employees more than 180 people, and all kinds of professionals more than 60 people, has a total area of about 30,000 square meters of factory, supporting a number of producing line jointly-production, and providing the whole set of production services from casting, finishing, assembling, and to whole machine out factory.

Our company to "honesty, quality first; constant innovation, the pursuit of excellence" for the purpose, sincerely look forward to establish long-term friendly and cooperative relationships with new and old customers.

We warmly welcome new and old customers!



产品目录

Product catalog



01-02
NS 自吸式离心泵
NS Series Self-Priming Centrifugal Pump



03
SU 系列自吸泵
Su Series Self-Priming Centrifugal Pump



04
高压双叶轮自吸泵
High pressure impeller pump



05
手压泵系列
Hand pressure pump series



06
汽油机组系列
Gasoline unit series



07
柴油机组系列
Series of diesel engine



08
喷灌泵
Spray irrigation pump



09
1 1/2 TC-24 自吸式离心泵
1 1/2 TC-24 series Self-Priming Centrifugal Pump



10
FSR 自吸式离心泵
FSR Series Self-Priming Centrifugal Pump



11-12
WPA 型
WPS 型



NS 自吸式离心泵 NS Series Self-Priming Centrifugal Pump



NS 系列 自吸式离心泵，具有结构简单轻便耐用，流量大，不需底阀等特点，该泵适合于工业建筑、矿区、农业、城市供排水。

NS series self-priming centrifugal pump features simple in structure, light in weight, durable, big flow capacity and without foot valve. It is applied for water supply and drainage in industry building, mining area, agriculture and city.

技术参数

型号 Model		NS(SS)-50	NS(SS)-80	NS(SS)-100	NS(SS)-125	NS(SS)-150
吸入、排出口径 Bore (mm/inch)		50/2	80/3	100/4	125/5	150/6
转速 Speed 1450 (r/min)	最大流量 Max.Flow (m ³ /h)	24	60	86	95	150
	最大扬程 Total Head (m)	13	14	16	15	16.5
	配用功率 Power (KW/HP)	1.5/2	3/4	4/6	5.5/8	7.5/10
2200 (r/min)	最大流量 Max.Flow (m ³ /h)	35	85	115	140	200
	最大扬程 Total Head (m)	25	30	32	30	32
	配用功率 Power (KW/HP)	3/4	4/6	7.5/10	8.5/12	22/30
2600 (r/min)	最大流量 Max.Flow (m ³ /h)	40	100	130	150	
	最大扬程 Total Head (m)	32	34	38	35	
	配用功率 Power (KW/HP)	4/6	7.5/10	11/16	15/20	
2900 (r/min)	最大流量 Max.Flow (m ³ /h)	45	138			
	最大扬程 Total Head (m)	38	40			
	配用功率 Power (KW/HP)	5.5/8	11/6			
自吸高度 Self-Priming Lift (m)		5-6				
泵重量 Weight (kg)		22	34	40	70	110

SU 系列自吸泵 Su Series Self-Priming Centrifugal Pump



注意事项:

1. 适用范围由于本系列水泵用于农业灌溉, 适用液体的PH值在5~9之间, 液体的温度小于80℃。不能用于抽排泥浆水。
2. 启动加入引水本系列水泵属于自吸泵, 运转前必须在出水口顶部加入引水, 直到灌满为止。如不加入引水, 水泵无法抽出水, 并会因此磨损机械密封。
3. 吸管的连接(进水管的连接)必须用抱箍把水管紧固在管接上, 如果水泵加水后, 正常运转仍不能抽水可能是吸管漏水, 要重新旋紧抱箍。
4. 水泵运转方向以箭头指示方向为准, 严禁逆向运转。
5. 建议转速不要超过4000转/分, 配套电机。汽(柴)油机功率和转速请参照泵体铭牌上的参数。
6. 工作完毕, 排净泵体内的水。水在0℃以下要结冰, 如泵体存水结冰会导致泵体破裂。放水口在泵体底部。
7. 配套的电机皮带盘, 及皮带要与水泵上的型号一致。
8. 水泵在工作前必须固定, 并和配套电机保持0.8米以上的空间。

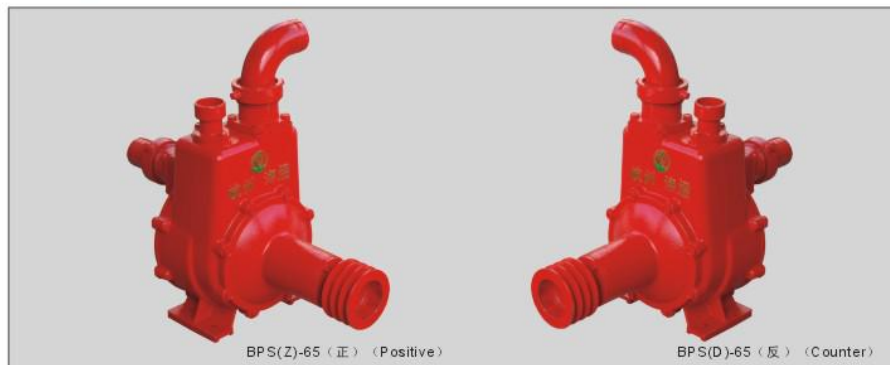
CAUTION

1. Application as this pump is exclusively used for civil, using Liquid PH=5-9, Liquid temperature $\leq 80^{\circ}\text{C}$ do not apply muddy water. Trouble if you dont observe. It will shorten the life of the pump
2. Priming as this pump is of self-priming type, pour water fully from priming port before running. Trouble if you dont observe. Impossible pumping
Damage of mechanical seal
3. Connection of mechanical hose If priming is not made by running after pouring water from priming port, it is almost because of imperfect connection of suction hose. In such a case, run after checking again connection of hose. Trouble if you dont observe. Im possible pumping
4. Always rotate arroundirecyion. Please turn according to the direction that the Arrowhead showConverse running will destroy the pump.
5. Dont tum over 4000rpm. Because it needs greater power. Please set correct pulley on notor shaft.
$$\text{Pump rpm} = \frac{\Phi \text{engine pulley} \times \text{engine rpm}}{\Phi \text{pump pilley}}$$
6. Dont run dry.
7. Drain of water after use. Water inside casing freezes at below 0°C in water and thereby pump may possibly be broken. After use, drain water from drain port bottom to store. Trouble if you dont observe. Breakeage of pump casing.
8. Use the atrap that fit the strap set of pump.
9. It is good to keep 1 M space between power shaft and pump shaft, suitability elasticity.
10. Fix up the pumps before using.

规格参数

型 号	MODEL	SU-25	SU-40	SU-50	SU-80	SU-100
连接管径	Connection Dia(mm)	25 (1")	40 (1½")	50 (2")	80 (3")	100 (4")
扬程 (m)	Head(m)	21	24	36	36	25
容量 (m³/h)	Volume(m3/h)	15	20	25	40	80
转速 (rpm)	Revolution(rpm)	3600	3600	3600	3600	3600
功率 (马力)	Packing dimensions	3	4	5.5	7	13

高压双叶轮自吸泵 High pressure impeller pump



BPS(Z)-65 (正) (Positive)

BPS(D)-65 (反) (Counter)

主要用途与适用范围

高压双叶轮自吸泵是我公司最新自主研发的一款高扬程水泵, 其主要特点有:

1. 以双级叶轮为依托, 压力超高(达1.2Mpa), 扬程高达110米, 适应高压喷灌和远程输送;
2. 双吸入, 上水速度快, 具备稳定的自吸功能;
3. 双回流密封, 流量损耗小, 相对流量增大;
4. 利用单相前回流, 达到自吸效果。该泵使用方便, 适应性强。

Main usage and application scope

High-pressure dual-impeller self-priming pump is the latest independent research of our company that a high lift pump, its main features are:

1. two-stage impellers based, ultra-high pressure (amounted 1.2 Mpa), lift up to 110 meters, suitable for high-pressure sprinkler and remote delivery;
2. double suctions, water flow speed fast, have a stable self-priming;
3. double reflux seal, flow losses become small, and the relative flow rate increases;
4. the pump is easy to use and has a high adaptable.

高压双叶轮自吸泵规格及技术参数

型号 Model	流量 (m³/h) Max.Flow	扬程 (m) Head	转速 (rpm) Speed	动力 (kw) Power	吸程 (m) The absorption process	自吸时间 (s) Self priming time
BPS-65	40	75	2600	8.8(12)	9	100s/5m
	45	95	2900	12(15)	9	90s/5m
	50	110	3200	15(20)	9	80s/5m

柴油机组系列

Series of diesel engine



BS-80-160

TC-1.5

主要用途与适用范围

适应性强，特别适应丘陵山区的农作物灌溉。能防止水、土、肥流失，防止土壤板结，调节田间小气候，冲刷作物茎叶上的尘土，有利于作物的生长。

海煜轻型喷灌机由优质动力机，高效节能的喷灌自吸泵和摇臂式喷头等组成，各项技术性能指标具有国内先进水平。结构轻巧，外形美观，使用可靠。广泛适用于各种农田、菜园、茶园、果园、苗圃、园林绿化、沙漠植被的喷灌，也可单独作自吸水泵机组，用于城镇、工矿、建筑施工等作业的给水排水。

Main usage and application scope

Good adaptability, particular suitable for crop irrigation in highland. It can prevent loss of water, soil and fertilizer, adjust field climate and wash away dust on stem and leaf of crop to help crop grow.

Haiyu light-duty sprinkling machine consists of high quality motor, energy-saving self-priming pump and beam nozzle. Its technical index has reached the advanced level in domestic. Featured compact, beautiful and reliable, it is widely used for spray irrigation in farm and vegetable garden, tea garden, fruit garden, nursery garden, landscaping and desert vegetation, as well as used as self-priming pump set for water supply and drainage in town, factory and construction, etc.

柴油机组规格及技术参数

型号 Model	流量 (m³/h) Max. Flow	扬程 (m) Head	转速 (rpm) Speed	动力 (型号) Power (Model)	吸程 (m) The absorption process
TC-1.5	12	20	2600	170-160	7
BS-80-160	45	40	2600	175	7-9
BZS-50	30	40	2600	170	7-9

喷灌泵

Spray irrigation pump



主要用途与适用范围

喷灌是一种比较先进的农业灌溉技术，它是利用喷灌机具有将水喷射到空中散成细雨滴进行灌溉。它与一般地面灌溉方法比较，具有以下特点：

- (1) 省水50%；
- (2) 增产10~30%，在干旱缺水地区效果更显著；
- (3) 省地5~15%；
- (4) 适应性强，特别适应丘陵山区的农作物灌溉。能防止水、土、肥流失，防止土壤板结，调节田间小气候，冲刷作物茎叶上的尘土，有利于作物的生长。

海煜轻型喷灌机由优质动力机，高效节能的喷灌自吸泵和摇臂式喷头等组成，各项技术性能指标具有国内先进水平。结构轻巧，外形美观，使用可靠。广泛适用于各种农田、菜园、茶园、果园、苗圃、园林绿化、沙漠植被的喷灌，也可单独作自吸水泵机组，用于城镇、工矿、建筑施工等作业的给水排水。

Main usage and application scope

Spray irrigation is a kind of advanced agricultural irrigation technology, it uses sprinkling machine to spray water into small raindrops in the sky to irrigate. Compared with common surface irrigation, it has the following characteristics:

- (1) Save water by 50%;
- (2) Increase production by 10~30%, particularly obvious in arid region;
- (3) Save land by 5~15%;
- (4) Good adaptability, particular suitable for crop irrigation in highland. It can prevent loss of water, soil and fertilizer, adjust field climate and wash away dust on stem and leaf of crop to help crop grow.

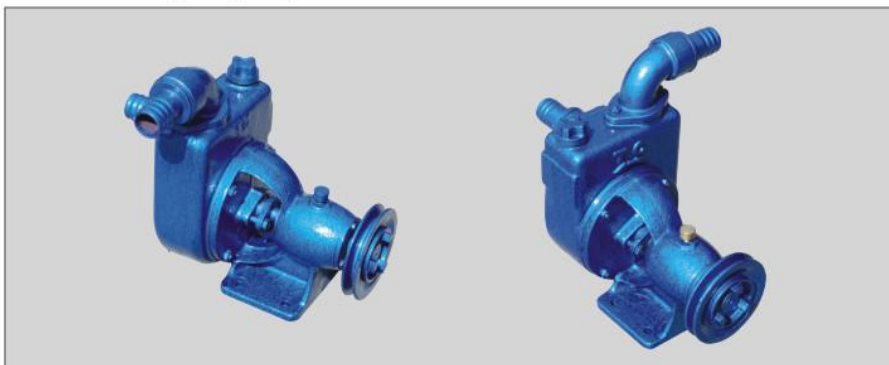
Haiyu light-duty sprinkling machine consists of high quality motor, energy-saving self-priming pump and beam nozzle. Its technical index has reached the advanced level in domestic. Featured compact, beautiful and reliable, it is widely used for spray irrigation in farm and vegetable garden, tea garden, fruit garden, nursery garden, landscaping and desert vegetation, as well as used as self-priming pump set for water supply and drainage in town, factory and construction, etc.

喷灌泵规格及技术参数

型号 Model	流量 Max. Flow (m³/h)	扬程 Head (m)	转速 Speed (rpm)	功率 Power (kw)	效率 Power (%)	5米高自吸时间 Self-Priming Lift (s)
50ZB ₄₀ -45	20	45	2600	4.4	60	100
65BPZ ₄₀ -45	28	45	2600	5.9	62	120

TC-24自吸式离心泵

TC-24 Series Self-Priming Centrifugal Pump



1.5TC—24单级单吸自吸式水泵，系供吸送清水及物理化学性质类似于水而最高温度不超过80℃的液体之用。本泵适用于工业、建筑、农业、菜园、花园、治虫、喷灌、城市、农村供水及排水使用。

1.5TC—24自吸泵具有结构简单，轻便耐用，不用底阀，故障绝少、使用维修方便等特点。在初次使用时，泵内灌满引液以后，一经启动若干秒钟内可自动出水，如不搬移不必再加引液。TC系列自吸泵可采用电机直接传动，亦可用其它动力通过皮带轮间接传动。

1.5TC-24 Series: single-stage self-priming pump, for pumping and absorption liquid that water or physical and chemical properties similar to water, and the temperature does not over 80°C. The pumps are suitable in urban and rural supply and drainage water for industrial, construction, agricultural, vegetable garden, flower garden, pest control, spray irrigation, etc.

1.5TC-24 self-priming pump has characteristics of simple structure, light and durable, without bottom valve, fault rarely, easy maintenance and so on. When the first use, after filled with liquid in the pump, once the start it will automatically supply water within several seconds, and if do not need add guide liquid if it do not move.

TC series self-priming pump can be used motor direct drive, and it can also be used other power by pulley indirect drive.

技术参数

型号	吸入、排出口径	转速	配用功率	流量	扬程	自吸高度	泵重
Model	Bore (mm/inch)	Speed (r/min)	Power (kw)	L/min (m ³ /h)	Head (m)	Suction Lift (m)	Weight (kg)
1.5TC-24	1.5	11	21	2900	38	38	
2TC-22 2TC-25	3	11 18 22	27.4 25 22.5	2900	50	50	
2TC-30 2TC-32	4	12 18 28	34 32 26	2900	50	50	
2TC-50A	5.5	16	48	2900	50	50	
3TC-45	11	46	45	2900	80	80	
3TC-30 3TC-38	7.5	25 41 50	40 38 35	2900	80	80	
4TC-20	7.5	82	22	2900	100	100	

FSR 自吸式离心泵

FSR Series Self-Priming Centrifugal Pump



3/4寸柴油机冷却泵

FSR 系列 离心泵，具有结构简单、轻便耐用，流量大，不用底阀，使用维修方便。适用于工业建筑、农业、城市供水及排水使用。

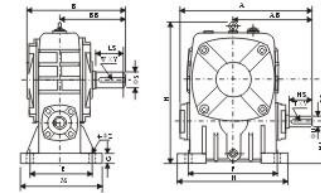
FSR series centrifugal pump features simple in structure, light in weight, durable, big flow capacity, without foot valve and easy to maintain. It is applied for water supply and drainage in industry building, agriculture and city.

技术参数

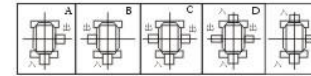
型号	吸入、排出口径	转速	配用功率	流量		扬程	自吸高度	泵重
				L/min	(m ³ /h)			
FSR-50	50/2	2000	1.1	250	15	11	5	27
		2400	2.2	300	18	16		
		2900	3.0	375	22.5	21.5		
FSR-80	80/3	1450	1.5	483	30	8.2	5	47
		2200	4.0	750	45	16.5		
		2600	7.5	860	51.6	26		
FSR-100	100/4	1450	3.0	900	54	9.5	5	63
		1900	5.5	1150	69	16		
		2200	10	1350	81	21.5		
FSR-150	150/6	1450	7.5	2200	132	11	5	137
		1700	11	2580	154.8	15		
		1900	16	2860	171.6	18		



WPA型

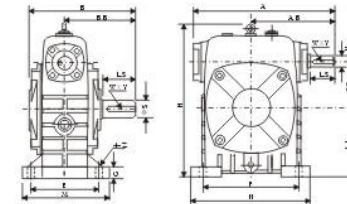


轴指向表示 SHAFT DIRECTION

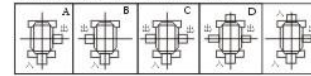


型号 size	减速比 ratio	尺寸										人力轴 inputshaft			出力轴 outputshaft			重量 weight (kg)			
		A	AB	B	BB	CC	H	HL	M	N	E	F	G	Z	HS	U	T×V		LS	S	W×Y
40		143	87	114	74	40	138	40	90	100	70	80	13	10	25	12	4×2.5	28	14	5×3	4
50		175	107	150	97	50	176	50	120	140	95	110	15	12	30	12	4×2.5	40	17	5×3	7
60	1/10	198	122	168	112	60	204	60	130	150	105	120	20	12	40	15	5×3	50	22	6×3.5	10
70	1/15	231	140	194	131	70	236	70	150	190	115	150	20	15	40	18	6×3.5	60	28	8×4	15
80	1/20	261	160	214	142	80	268	80	170	220	135	180	20	15	50	22	6×3.5	65	32	10×6	20
100	1/25	322	190	254	169	100	336	100	190	270	155	220	25	15	50	25	8×4	75	38	10×6	35
120	1/30	381	229	282	190	120	430	120	230	320	180	260	30	18	65	30	8×4	85	45	14×5.5	60
135	1/40	433	260	317	210	135	480	135	250	350	200	290	30	18	75	35	10×6	95	55	16×6	80
155	1/50	504	302	382	252	155	531	155	275	390	220	320	35	21	85	40	12×6	110	60	18×7	110
175	1/60	545	325	402	262	175	600	180	310	430	250	350	40	21	85	45	14×5.5	110	65	18×7	150
200		587	350	467	305	200	666	175	360	480	290	390	40	24	95	50	14×5.5	125	70	20×7.5	215
250		705	420	552	360	250	800	200	460	560	380	480	45	28	110	60	18×7	155	90	25×9	300

WPS型



轴指向表示 SHAFT DIRECTION



型号 size	减速比 ratio	尺寸										人力轴 inputshaft			出力轴 outputshaft			重量 weight (kg)			
		A	AB	B	BB	CC	H	LL	M	N	E	F	G	Z	HS	U	T×V		LS	S	W×Y
40		143	87	114	74	40	141	60	90	100	70	80	13	10	25	12	4×2.5	28	14	5×3	4
50		175	107	150	97	50	180	80	120	140	95	110	15	12	30	12	4×2.5	40	17	5×3	7
60	1/10	198	122	168	112	60	207	90	130	150	105	120	20	12	40	15	5×3	50	22	6×3.5	10
70	1/15	231	140	194	131	70	238	105	150	190	115	150	20	15	40	18	6×3.5	60	28	8×4	15
80	1/20	261	160	214	142	80	273	120	170	220	135	180	20	15	50	22	6×3.5	65	32	10×6	20
100	1/25	322	190	254	169	100	334	150	190	270	155	220	25	15	50	25	8×4	75	38	10×6	35
120	1/30	381	229	282	190	120	423	180	230	320	180	260	30	18	65	30	8×4	85	45	14×5.5	60
135	1/40	433	260	317	210	135	482	215	250	350	200	290	30	18	75	35	10×6	95	55	16×6	80
155	1/50	504	302	382	252	155	541	235	275	390	220	320	35	21	85	40	12×6	110	60	18×7	110
175	1/60	545	325	402	262	175	600	260	310	430	250	350	40	21	85	45	14×5.5	110	65	18×7	150
200		587	350	467	305	200	677	290	360	480	290	390	40	24	95	50	14×5.5	125	70	20×7.5	215
250		705	420	552	360	250	824	350	460	560	380	480	45	28	110	60	18×7	155	90	25×9	300



砂处理生产线



砂处理主机



射芯机



全自动造型机

皮带轮系列 Pulley series



铝铸件 Aluminum casting



铁铸件 Iron castings

